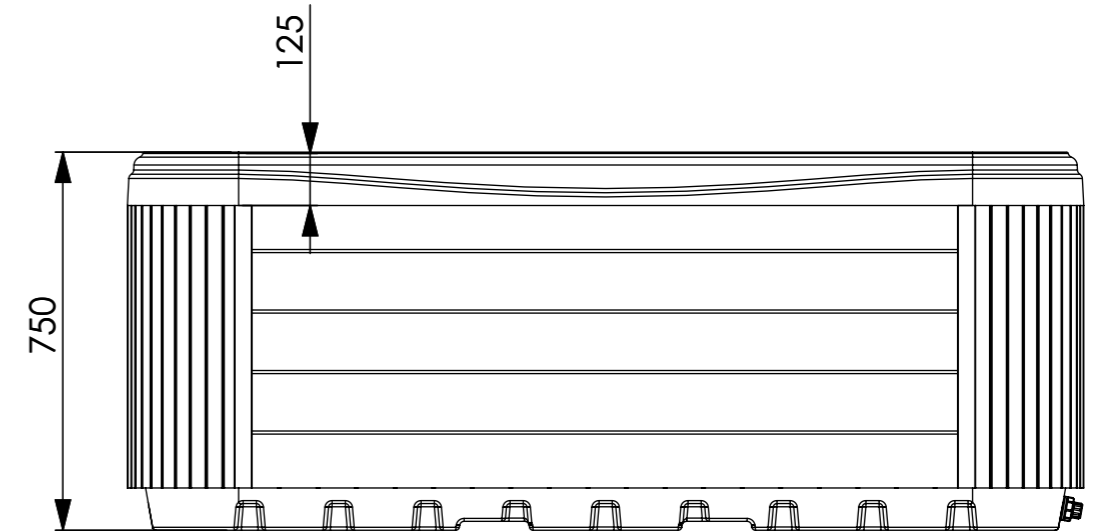




Product code	Jets	PC
AJ00217	Jet 3" - transparent 1 Hole rotational transparent V3 Wellis	6
AJ00216	Jet 3" - transparent 1 Hole transparent V3 Wellis	11
AJ00214	Jet 2" - transparent 1 Hole transparent V3 Wellis	20
AJ00228SET	3" jet body V3 transparent set	17
AJ00226SET	2" jet body V3 transparent set	20



Number	Product code	Product name	PC
1.	ACM0594	Spa Pump 2/0.37 HP - Two Speed	1
2.	ACM0759	Control Panel IN.K300 - One Pump	1
3.	ACM0754	Control BOX - IN.YJ-2	1
4.	ACM0660	Ozone - Generator	1
	ABE0359	Ozone - Injection	1
	ABE0372	Check valve for ozone	1
5.	AKU1894	Water Diverter - Grip Wellis V2	1
6.	AKU1895	Air regulator grip Wellis V2	3
7.		Electrical connection	1
8.		Drain position	1
9.	AJ00169	Jet - 20 SB - Ozone 90°	1
10.	AKU0064	Suction - 73 S / 60.3 S - Thick	1
11.	AM01077	Filter House - wall one filter (LVJ)	1
14.	ACM0898	Audio amplifier bluetooth with transformer	1
	ACM0678	Speaker - Round Flat	1
	ACM0695	Speaker Cable - 2 x 0.75 RED-BLACK	1
17.	AF00062	Pillow 280x145x85 light grey	3
18.	AKU1609	Spa Filter - 175 x 152 - Myline white (coarse thread)	2

Product family: MyLine

Sheet name: Mars medence		Projection			
File name: FJ_WM00552_ENG					
Dimension SPA: 2130x1600x750 mm		Min. electrical needs: 230 V - 1x16A - 50Hz - 2 kW Heater			
Weight of the SPA: 175 kg		Raklap 2200x880x145 - AE00092		Control box: GECKO YJ2+K300 -2KW (1M)	
Rim height: 125 mm		Approved by: Samu József		Pr. No: P-000000 Fe. No: F-000000	
Minimum water: liter		Created: 2018. 09. 28.		Number: WM00552	
		Drawer: szomo - 2018. 09. 28. 11:46:20		A3 M 1:15 page 1 / 1	

1 person ~75 kg
Water disp.: kg
Minimum water: liter

Weight of the SPA: 175 kg
Rim height: 125 mm
Created: 2018. 09. 28.

A